

POCKET IDENTIFICATION GUIDE OF MAIN VULNERABLE SPECIES INCIDENTALLY CAUGHT IN TUNISIAN FISHERIES

Simplified guide adapted for Tunisia (GSA 12,13 & 14) from the Identification guide of vulnerable species incidentally caught in Mediterranean fisheries



MARINE MAMMALS



Stenella coeruleoalba

Striped Dolphin /
Dauphin bleu et blanc /
الدلفين الأزرق والأبيض (المخطط)
Ad: 1.8-2.6 m
NB: 85-95 cm



Glo Med



Delphinus delphis

Common dolphin /
Dauphin commun / الدلفين الشائع
♂: 2.0-2.6 m / ♀: 2.4 m /
NB: 80-90 cm



Glo Med



Tursiops truncatus

Bottlenose dolphin /
Grand dauphin, dauphin souffleur /
الدلفين الكبير (ذو الأنف الزجاجي)
♂: 2.5 - 3.9 m / ♀: 2.2-3.2
NB: 1-1.2 m



Glo Med



Balaenoptera physalus

Fin whale / Rorqual commun / المهرقول الشائع
♂: 18-20 m / ♀: 20-22 m / NB: 6-6.5 m



Glo Med

SEABIRDS



Larus michahellis

Yellow-legged gull / Goéland
leucophée / نورس أصفر الساق /
Wingspan: 1.2 - 1.4 m



Glo

Larus audouinii

Audouin's gull / Goéland
d'Audouin / نورس أودوين /
W: 1.17 - 1.28 m



Glo



Calonectris diomedea

Scopoli's shearwater /
Puffin de Scopoli /
جلم ماء سكوبولي
W: 1.12 - 1.22 m



Glo

Puffinus yelkouan

Yelkouan shearwater /
Puffin yelkouan / جلم ماء متوسطي
W: 70 - 84 cm



Glo



Phalacrocorax carbo

Great cormorant /
Grand Cormoran / غاق كبير
W: 77 - 94 cm



Glo

SEA TURTLES



Caretta caretta

Loggerhead / Tortue caouanne /
سلحفاة بحرية ضخمة الرأس
♂: 75-80 cm; ♀: 66-85 cm



Glo Med



Chelonia mydas

Green turtle / Tortue franche,
Tortue verte / السلحفاة الخضراء
Ad (♂ and ♀): 80-120 cm



Glo



Dermochelys coriacea

Leatherback / Tortue luth /
سلحفاة المحيط جلدية الظهر
Average adult length 1.4-1.6 m



Glo

CHONDRICHTYANS



Mustelus asterias – SDS

Starry smooth-hound shark / Émissole tachetée / كلب نجمي (قطاط)
Ad: up to 1.4 m



Glo Med

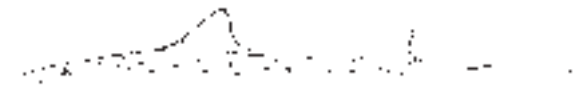


Mustelus mustelus – SMD

Smooth-hound / Émissole lisse / كلب ناعم (قطاط)
Ad: up to 2 m



Glo Med



Mustelus punctulatus – MPT

Blackspotted smooth-hound / Émissole pointillée / كلب منقط (قطاط)
Ad: up to 1.9 m



Glo Med



Carcharhinus brevipinna – CCB

Spinner shark / Requin tisserand / قرش لولبي (وشة / بومنقار)
Ad: up to 28 cm



Glo



Squalus blainville – QUB

Longnose spurdog / Aiguillat-coq / كلب أبو شوكة مأنف قطاط بوشوكة
Ad: 50 – 80 cm, occasionally until 1.1 m



Glo Med



Squalus megalops – DOP

Shortnose spurdog / Aiguillat nez court / قطاط بوشوكة
Ad: less than 70 cm in total length (also 100 cm TL)



Glo Med



Carcharhinus plumbeus – CCP

Sandbar shark / Requin gris / قرش رمادي (كلب بحر)
Ad: up to 3 m



Glo Med

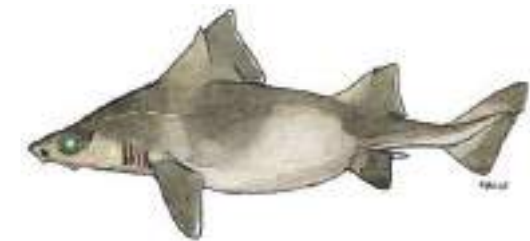


Isurus oxyrinchus – SMA

Shortfin mako / Requin-taupe bleue / زرقابا (زرقابا)
Ad: up to 4.5 m



Glo Med



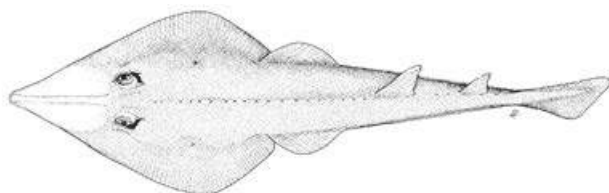
Oxynotus centrina – OXY

Angular rough shark / Centrine commune / حمار البحر (نعجة)
Ad: up to 1.5 m



Glo Med

CHONDRICHTYANS



Glaucostegus cemiculus – RBC

Blackchin guitarfish / Guitar de Mer fousseuse /
قِيثَارَة سَوْدَاء الذَّقْن (مِحْرَاث / قِرْس)
Ad: up to 2.42 m length



Glo Med



Hexanchus griseus – SBL

Bluntnose six-gill shark / Requin gris /
كَلَب أَبُو سِتَّة (الدودة)
Ad: up to 5 m



Glo Med

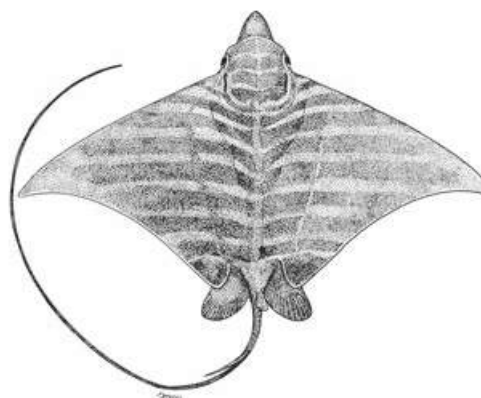


Squatina aculeata – SUA

Sawback angelshark /
Ange de mer épineux / (سفن / وقاص)
Ad: up to 1.9 m in total length



Glo Med



Aetomylaeus bovinus – MPO

Bullray / Aigle Vachette / رَايَة بَقْرَة (البقرة)
Ad: Disc wide up to 2.2 m



Glo Med



Dipturus oxyrinchus – RJO

Longnosed skate /
Raie-capucin / قَرِشَلَا
Ad: up to 1.5 m in total length



Glo Med



Squatina oculata – SUT

Smoothback angelshark /
Ange de mer ocellé / (سفن / وقاص)
Ad: up to 1.6 m in total length



Glo Med



Rhinobatos rhinobatos – RBC

Common guitarfish / Guitar de Mer commune /
قِيثَارَة شَائِعَة (مِحْرَاث / قِرْس)
Ad: 1.5 m in total length



Glo Med



Mobula mobular – RMM

Devil fish / Diable de mer,
Raie à oreilles / عَيْنُوفِي قَرْنُو
Ad: Disc wide up to 5.2 m



Glo Med



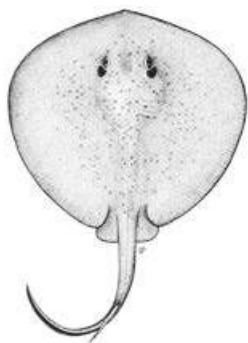
Squatina squatina – AGN

Angelshark / Ange de mer commun /
(سفن / وقاص)
Ad: up to 2.5 m



Glo Med

CHONDRICHTYANS



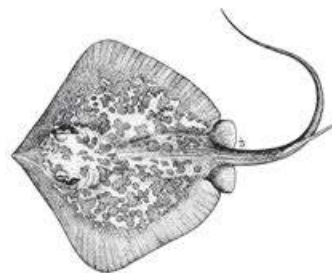
Taeniurops grabata - RTB
 Round fantail stingray /
 Pastenague africaina /
 (ترش)
 Ad: up to 80 cm in total length

DD DD
 Glo Med



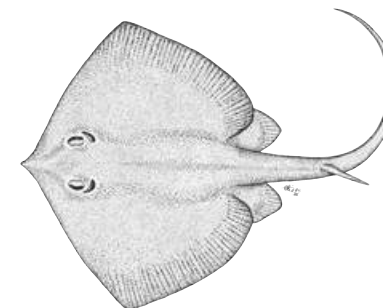
Dasyatis pastinaca - JDP
 Common stingray / Rina /
 راية لاسعة شائعة (حمام)
 Ad: Disc wide up to 68 cm

DD VU
 Glo Med



Dasyatis marmorata - RDQ
 Marble stingray / Pastenague marbrée /
 راية رخامية لاسعة
 Ad: Disc wide up to 60 cm

DD DD
 Glo Med



Dasyatis tortonesei - JDP
 Tortonese's stingray / Pastenague
 de Tortonese / (حمام)
 Ad: Disc wide up to 84 cm

DD VU
 Glo Med



Raja radula - JAR
 Rough ray / Ange de mer commun /
 راية خشنة (قرشلة)
 Ad: up to 70 cm in total length

EN EN
 Glo Med



Raja miraletus - JAI
 Brown ray / Raie miroir /
 راية إم عيون (قرشلة)
 Ad: up to 70cm in total length

LC LC
 Glo Med



Raja clavata - RJC
 Thornback ray / Raie bouclée /
 قرشلا او قرداش
 Ad: up to 90-130cm in total length

NT NT
 Glo Med



Gymnura altavela - RGL
 Spiny butterfly ray / Raie-papillon
 épineuse / راية الفراشة (حصيرة)
 Ad: Disc wide up to 4 m, common 2 m

VU CR
 Glo Med



Myliobatis aquila - MYL
 Common eagle ray /
 Aigle de mer / بقرة
 Ad: Disc wide up to 1.5 m

DD VU
 Glo Med



Torpedo torpedo - TTV
 Common torpedo / Torpille ocellée /
 راية حَلْفِيَّة (نعاس)
 Ad: 60 cm in total length

DD LC
 Glo Med



Torpedo marmorata - TTR
 Marbled electric ray /
 Torpille marbrée /
 راية مَرْمَرِيَّة (نعاس)
 Ad: up to 1 m in total length

DD LC
 Glo Med

SPONGES



Massive keratose sponges – KERA



Sarcotragus sp.



Sarcotragus sp.



Hippospongia communis



Ircinia variabilis

Globular sponges – GLOS



Suberites domuncula

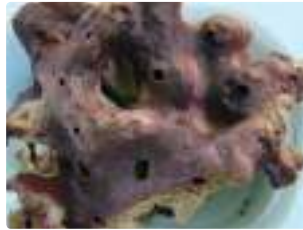


Tethya aurantium



Therea spp.

Massive Mediterranean stony sponge – PETR



Petrosia ficiformis (burgundy morph)

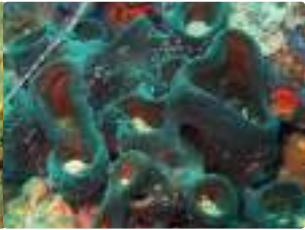


Petrosia ficiformis (white morph)

Lamellate to cup-shaped sponges – LAMS



Spongia lamella



Calyx nicaeensis

Arborescent sponges – ARBS



Axinella sp.



Axinella cannabina

Fan-shaped sponges – FANS



Phakellia ventilabrum



Phakellia robusta

Massive, (sub-) spherical hard sponges (*Geodia* spp.) – GEOD



Geodia cydonium

Massive-tubular gold sponges (*Aplysina* spp.) – APLY



Aplysina spp.

Lamellate rock sponges (*Leiodermatium* sp.) – ROCK



Leiodermatium pfeifferae

Other massive sponges (to be recorded as "Other massive") – OTHR



Agelas oroides

Birds' nest glass sponge – BIRD



Pheronema carpenteri

Felt vase glass sponge – FELT



Asconema setubalense

CORALS

Soft corals – SOFT



Alcyonium palmatum

Thick and tall red, yellow fan-shaped gorgonians – FANG



Acanthogorgia hirsuta

Paramuricea clavata



Seapens – PENS



Pteroeides spinosum and *Pennatula* spp.

Bamboo corals – BAMB



Isidella elongata



Bright yellow or salmon-pink hard corals (*Dendrophyllia* spp.) – DEND



Dead *dendrophyllids*

Dendrophyllia cornigera



Dendrophyllia ramea



Thin, delicate white, reddish, yellow fan-shaped gorgonians – THIG



Paramuricea macrospina

Precious red coral – REDC



Corallium rubrum



Flexible white and salmon-pink fan-shaped gorgonians (*Eunicella* spp.) – EUNI



Eunicella cavolini

Eunicella verrucosa

Salmon-pink, brittle fan-shaped gorgonians – CALL



Callogorgia verticillata

White, stem-like sea pens – STEM



Funiculina quadrangularis



Kophobelemnion stelliferum

Candelabrum-shaped, red gorgonians – ELLP



Ellisella paraplexauroides

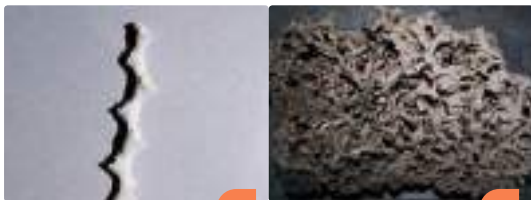


Tall, white or yellow whip gorgonians (*Viminella flagellum*) – VIMF



Viminella flagellum

White corals – WHIT



Madrepora oculata



Lophelia pertusa



Colonial hard corals – CLAD



Cladocora caespitosa



Arborescent black corals – BLAC



Antipathella subpinnata

Parantipathes larix

Leiopathes glaberrima



Antipathes dichotoma

Abbreviations

Ad: Adult
 ♂: Male
 ♀: Female
 NB: New Born
 W: Wingspan

Symbols



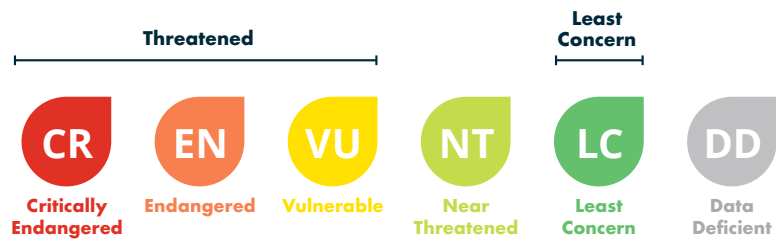
***Isurus oxyrinchus* – SMA**
 Shortfin mako / Requin-taupe
 bleue / زرقايا (زرقايا)
 Ad: up to 4,5m

Scientific name | Common name in English, French and Arab | Species size given as total length or wingspan for Adults (Ad) or Females (♀), Males (♂) and New Born (NB) | Shorthand ASFIS code | IUCN Red Data List status at Global and Mediterranean | The species have to be released alive, it cannot be retained on board, transhipped, landed, transferred, stored, sold or displayed or offered for sale*

VU **CR**
 Glo Med

Key to IUCN Red List category symbols

For each species sheets, the IUCN categories relating to the conservation status both globally (Glo) and Mediterranean (Med) level are reported, according to the following scheme:



Geographical subarea (GSA) 12 (Northern Tunisia), 13 (Gulf of Hammamet), 14 (Gulf of Gabes) refer to the Central Mediterranean Sea-North African coasts. If the incidentally caught species is not included in this guide, please refer to the **Identification guide of vulnerable species incidentally caught in Mediterranean fisheries**, which also provides detailed information on the conservation status, regulations and protection of each species (under ACCOBAMS, SPA/BD Protocol, CITES, CMS, GFCM, IUCN).

Illustration source of sharks and rays: FAO Original scientific illustrations archive. Reproduced with permission.

* GFCM recommendations related to the management and conservation of vulnerable species in the GFCM area of application: seabirds (Rec. GFCM/35/2011/3); sea turtles (Rec. GFCM/35/2011/4); cetaceans (Rec. GFCM/36/2012/2; Res. GFCM/43/2019/2); sharks and rays (Rec. GFCM/36/2012/3; Rec. GFCM/42/2018/2) and corals (Res. GFCM/43/2019/6). National legislation: Annual bylaw relating to the organisation of hunting and bylaw of 28 September 1995 regulating the exercise of fishing by Ministry of Agriculture, Water Resources and Fisheries.



QR Code